



DraftSight[®] Enterprise

DraftSight[®] Enterprise Plus

Installation and Configuration

Quick Guide (SNL & DSLS)

For DraftSight 2019 and onwards

Version 1.0 - 1/31/2019

Written by: L. Fernandes

Executive Summary

This guide is aimed at all DraftSight users, for reference or information when installing DraftSight Enterprise or DraftSight Enterprise Plus.

Note that the installation and configuration process requires information for the licensing process and product activation that you will receive from other sources (described in the Process Overview section of this document).

Information on how to access the installers of the applications is also provided. Links and or access paths to other resources might change in the future. If you experience any difficulty accessing files or information, please contact your SOLIDWORKS Reseller.

Before starting the installation of the applications, make sure that system and environment pre-requisites are met.

This document aims to be used as a quick-reference guide for users in this specific process. If you require more information on the applications involved or specific processes/functionality, please refer to the application's Help files or guide.

For usability/ease of access, we do not include exhaustive information or images of every single step mentioned in the process.

NOTES:

The information in this document uses the DraftSight 2019, SNL 2019 SP0, and DSLS R2018x versions/releases for process reference, prerequisites and supported platforms.

For additional information on the installation process or setup of the Licensing Manager application, please refer to the correspondent License Manager Installation and Configuration Guide/document included in the software installation package.

Table of Contents

1.	SOLIDWORKS SolidNetwork License Manager (SNL) Process Overview	4
1.1.	What you need	4
2.	Preparing for Installation	5
2.1.	Review the Application’s Pre-Requisites.....	5
2.2.	SNL Supported Operating Systems.....	5
2.3.	DraftSight Supported Operating Systems & System Requirements	5
3.	Installing the SOLIDWORKS SolidNetwork License Manager	6
3.1.	The License Server and Typical Client Setup	6
3.2.	Installing SNL on the License Server Machine.....	7
4.	License Manager and Product Activation	9
5.	Adding the DraftSight Serial Number to an existing SNL installation	13
5.1.	Checking the SNL version currently in use	13
6.	Adding and activating the DraftSight Serial Number.....	14
7.	License Manager and Product Activation	17
8.	Installing DraftSight on the workstations (manual).....	21
8.1.	DraftSight Installation Deployment.....	24
9.	Dassault Systemes License Manager (DSLS) Process Overview	24
9.1.1.	What you need.....	24
10.	Preparing for Installation.....	24
10.1.	Review the Application’s Pre-Requisites	25
10.2.	DSLS Supported Operating Systems	25
10.3.	DraftSight Supported Operating Systems & System Requirements	25
11.	Installing the DS License Manager	25
11.1.	Preliminary Remarks.....	25
11.2.	The License Server and Typical Client Setup.....	26
11.3.	Installing DSLS on the License Server Machine.....	27
12.	Configuration and Activation of the DS License Server.....	31
12.1.	License Server Configuration	31
12.2.	Activation of the DS License Server	32
12.3.	Managing Licenses	33
13.	Starting and Stopping the DS License Server.....	34
14.	Installing DraftSight on the workstations (manual)	37
14.1.	DraftSight Installation Deployment	39
	40

1. SOLIDWORKS SolidNetwork License Manager (SNL) Process Overview

This guide covers the installation process for the SOLIDWORKS SolidNetwork License Manager (SNL), on a supported Windows Operating System and the DraftSight Enterprise Version on client machines. The SNL installation and configuration will be presented in two scenarios :

- Installing SNL for the first time
- Adding the DraftSight Enterprise or Enterprise Plus entitlement to an existing SNL installation

1.1. What you need

- ▶ A DraftSight Enterprise License Key/Serial Number
- ▶ The SOLIDWORKS Solidnetwork License Manager Installer files
- ▶ The DraftSight Installer files

Note: You can access the SNL and DraftSight Installer files in the following locations:

- ▶ DraftSight: DraftSight Download page
[DraftSight.com/Download](https://www.draftsight.com/Download)
- ▶ SNL: SOLIDWORKS Customer Portal
If you require the SNL installer, you can download only the specific/required files by
 - ▷ After Login in the Customer Portal, go to the Downloads area
 - ▷ Click SOLIDWORKS in the products list
 - ▷ Accept the EULA Agreement, and you will be redirected to the download page.
 - ▷ Click the Download link under Step3 (“If the Installation Manager Assisted Manual downloads fail, you can individually **download...**”).
 - ▷ Click “Continue” in the following page, and you will be directed to the list of products currently available.
 - ▷ Under “**Step 5 - Optional updates**”, you can find the SolidNetWork License Manager
(https://www.solidworks.com/sw/support/subscription/downloads/download_package.htm)

2. Preparing for Installation

To guarantee a successful installation, before you start installing either the License Manager in your Server or DraftSight in the workstations, it's important that you review the system requirements, understand administrative permission requirements, and address the points referenced below.

2.1. Review the Application's Pre-Requisites

Check if the machines on which you are going to install SNL and DraftSight meet the system requirements. Not meeting the system requirements or supported platforms might originate performance problems and/or errors, either when using SNL or DraftSight and its features.

The License Manager requirements for DraftSight Enterprise/Enterprise Plus 2019 are:

- ▶ SNL version 2019 SP0 or later
- ▶ For DSLS: V6R2018x or later (refer to the DSLS Installation Guide part of this document)

Any change in the pre-requisites does not require the replacement of licenses in use: Valid licenses will continue to be usable until their expiry date. In the same way, previous DraftSight versions installed do not require a mandatory update.

2.2. SNL Supported Operating Systems

The SNL supported Operating Systems are listed here

<http://www.solidworks.com/sw/support/SystemRequirements.html>

under the entry SOLIDWORKS Network License Server.

2.3. DraftSight Supported Operating Systems & System Requirements

With every DraftSight release, supported Operating Systems and System Requirements are published/available from a link available in the DraftSight Download page:

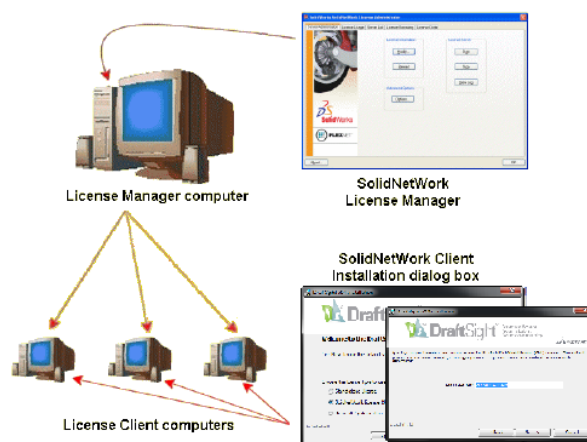
DraftSight.com/Download

3. Installing the SOLIDWORKS SolidNetwork License Manager

This section briefly presents what a typical license server and license client setup looks like, and highlights certain points you must keep in mind before and when performing the installation.

3.1. The License Server and Typical Client Setup

A license server helps the administrator to guarantee the license control is implemented in compliance with purchased licensed products embedding the license client. A typical license server and client setup looks like this:



SolidNetWork License Manager supports multiple license clients by distributing licenses to clients on the network. This allows the number of users to exceed the number of licenses by using floating licenses.

- ▶ The SolidNetWork License Manager software is installed and activated on the license manager computer only.
- ▶ License client computers do not have any additional SolidNetWork-specific software installed.
- ▶ If you specify the option SolidNetWork License serial number (SNL) when installing DraftSight on the client machines, SNL identifies the computer as a SolidNetWork license client.
- ▶ The DraftSight Installation Manager will prompt you for the SolidNetWork license manager computer name and port number to connect the client to the license manager.
- ▶ The license manager and all license clients must have TCP/IP (Transmission Control Protocol/Internet Protocol) connectivity.

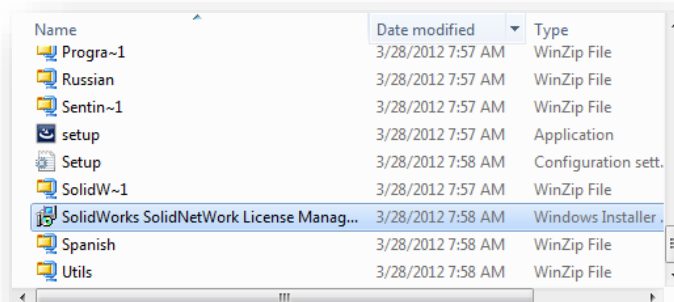
3.2. Installing SNL on the License Server Machine

This section explains how to install the SNL License Server on a single computer running a supported Windows Operating System. Installation and de-installation rely on Windows-compliant tools enabling anyone familiar with Windows procedures and concepts to install the software without assistance.

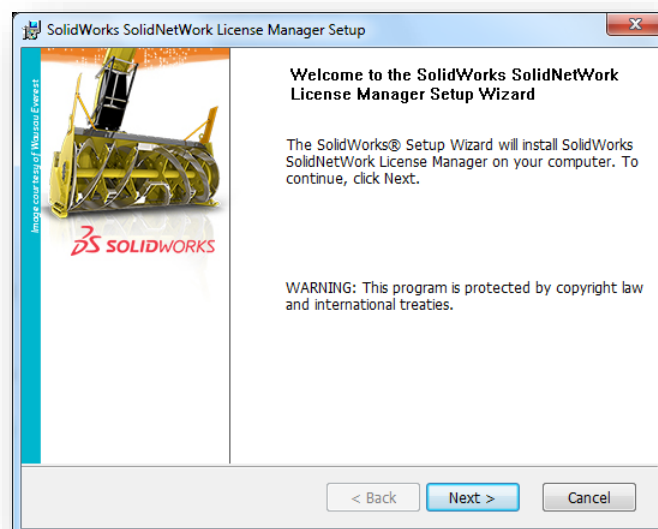
1. Log on as administrator.
2. You must belong to the Administrators group, or have the privileges assigned to the Administrators group. Otherwise, you might not be able to start the installation.
3. Download the application installer from the SOLIDWORKS Customer Portal

Prepare the Serial Number that was sent to you by the SOLIDWORKS Order Management Team.

4. Navigate to the location where you saved the 'SolidWorks SolidNetWork License Manager.msi' and double-click on it to start the installation.



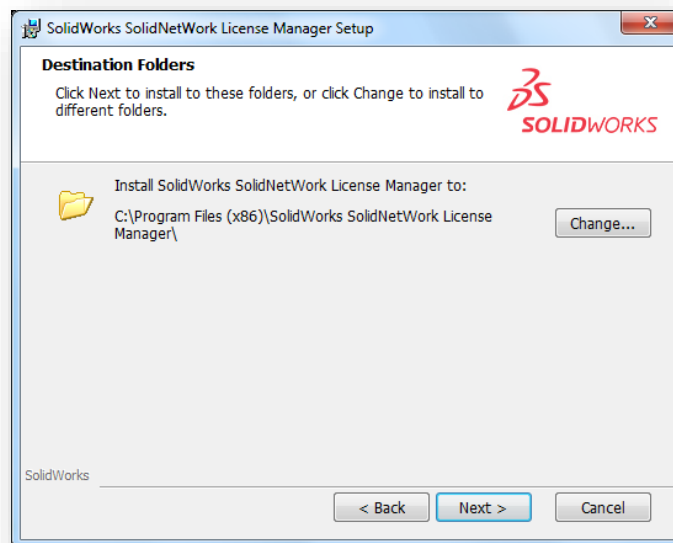
The SolidWorks SolidNetWork License Manager Setup dialog box appears. Click Next.



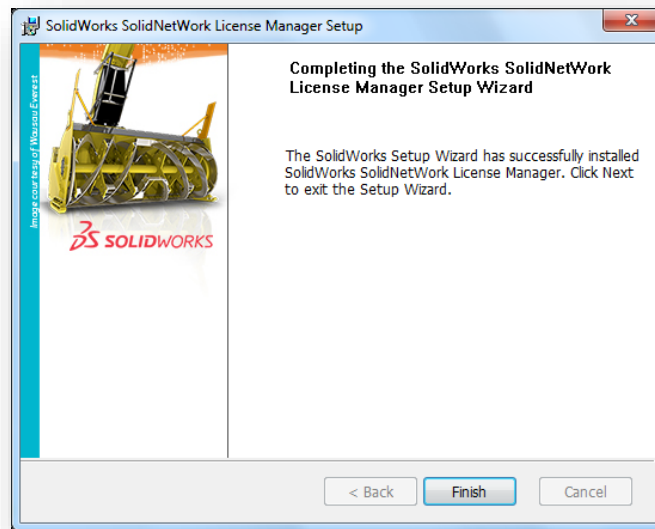
5. Enter your serial number as shown below and click Next.



6. Click Next to accept the default installation folder (or Change for a different destination folder). In the next dialog box click Install



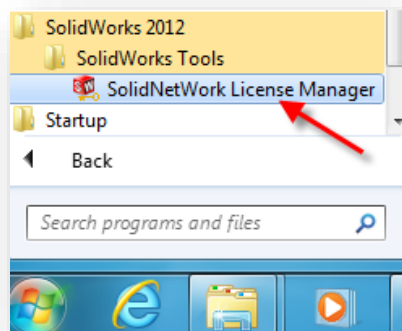
7. Click Finish in the next dialog box to finish the installation.



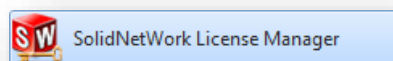
The SolidWorks SolidNetWork License Manager Setup window closes after SNL has been installed. The next step is to activate the DraftSight license.

4. License Manager and Product Activation

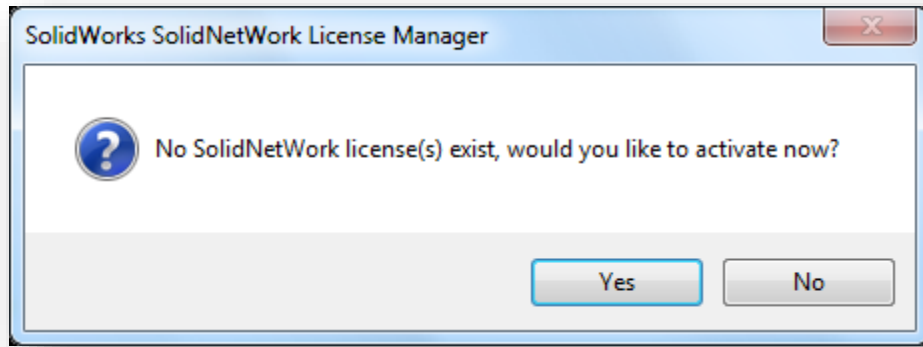
1. Launch SNL from the Start menu:



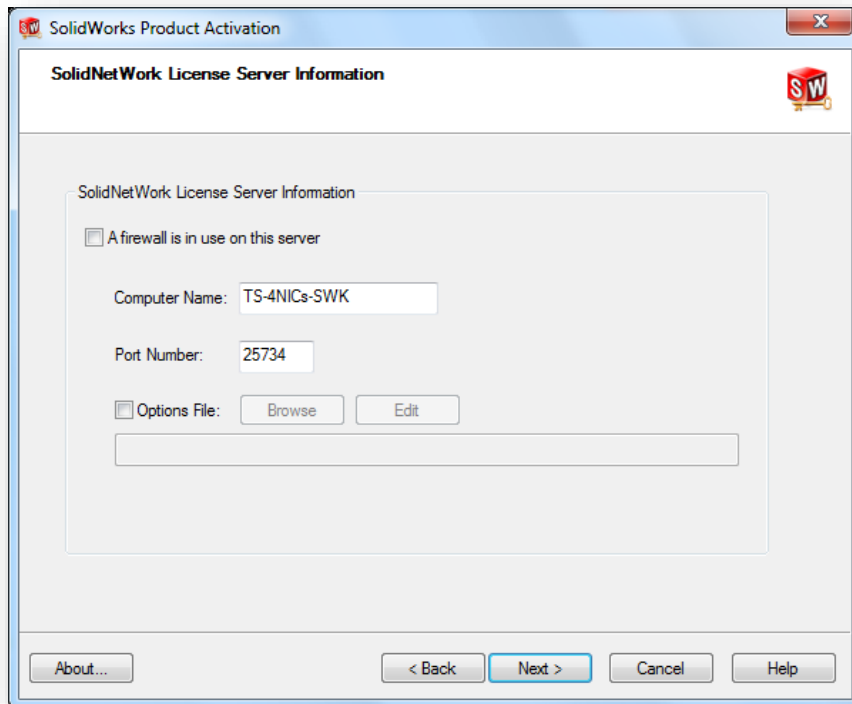
You may also have the icon in the Start menu, as shown below.



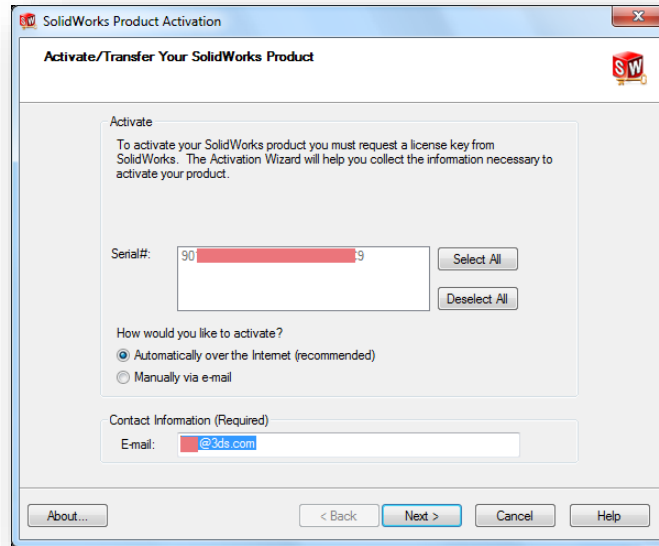
You are then prompted to activate.



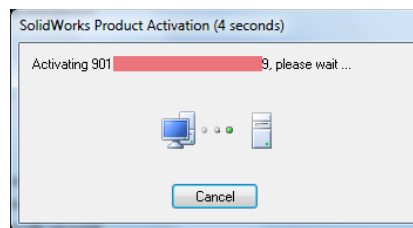
2. Select Yes. The SolidWorks Product Activation dialog box appears.



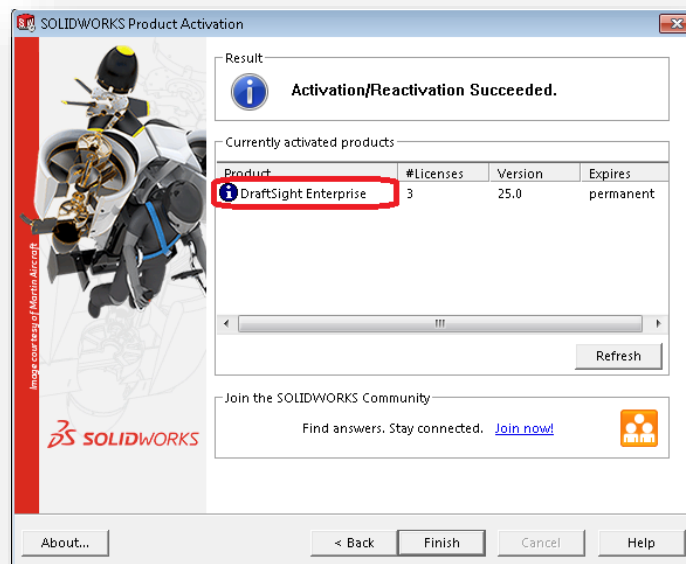
3. The Computer Name and Port Number are already populated. Click Next.



4. The serial number is displayed. Select Automatically over the Internet (recommended) to perform the activation. You need to enter a valid email address. Click Next.



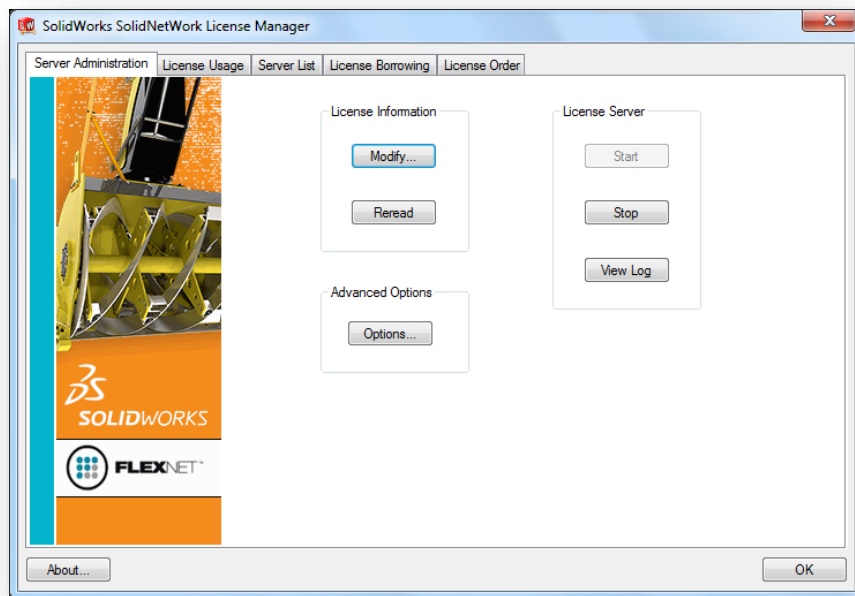
The activation is in progress.



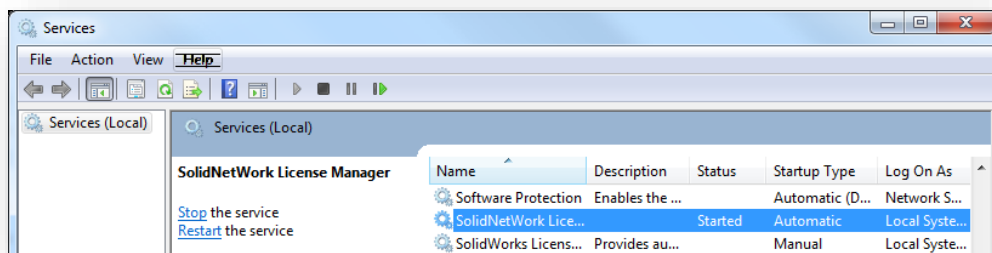
If the activation was successful, the product, here DraftSight Enterprise, and the number of licenses entitled in the serial number are displayed.

5. Click Finish to close the SolidWorks Product Activation dialog box.

The SolidWorks SolidNetwork License Manager dialog box pops-up.



6. Note that the Service must be started so that the client will be able to connect with this server (Start button under License Server) or you may as well start from the Services window ("C:\ProgramData\Microsoft\Windows\Start Menu\Programs\Administrative Tools\services.lnk")



The SolidWorks SolidNetworks License Manager is operational. The next step is to install DraftSight on the client machine. (See point 8, page 21 of this document)

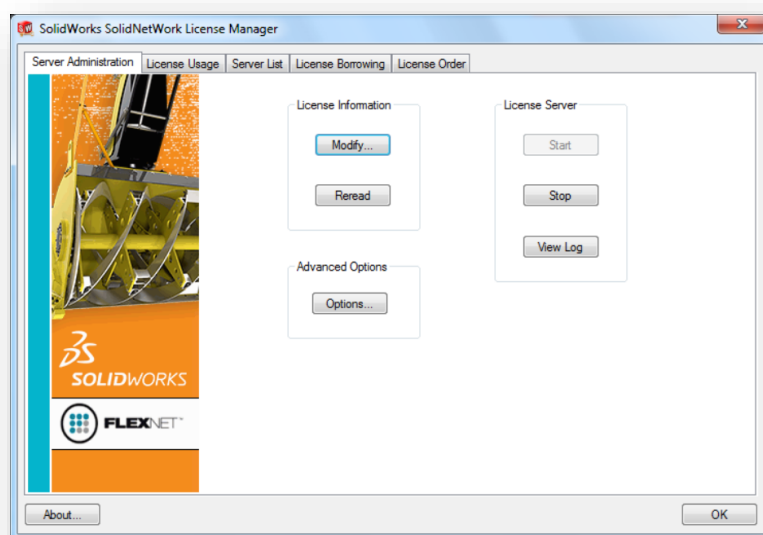
5. Adding the DraftSight Serial Number to an existing SNL installation

This section briefly presents the required steps to add the DraftSight serial number to an existing SNL installation, and highlights certain points you must keep in mind when performing the process. As stated earlier, please note that in order to run the current DraftSight version (DraftSight 2019), the SNL version required is SNL 2019 SP0 or later.

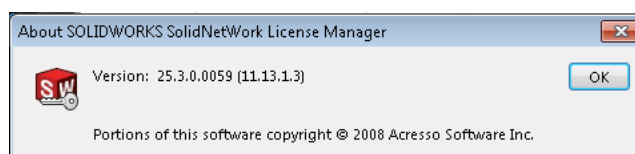
5.1. Checking the SNL version currently in use

In order to avoid any setbacks in the configuration of the applications, we recommend that you verify if the SNL version currently installed meets the licensing requirements for DraftSight 2019, prior to adding the DraftSight serial number to your SNL installation:

1. Launch SNL



Clicking About will display the version number of the SolidWorks SolidNetWork License manager:

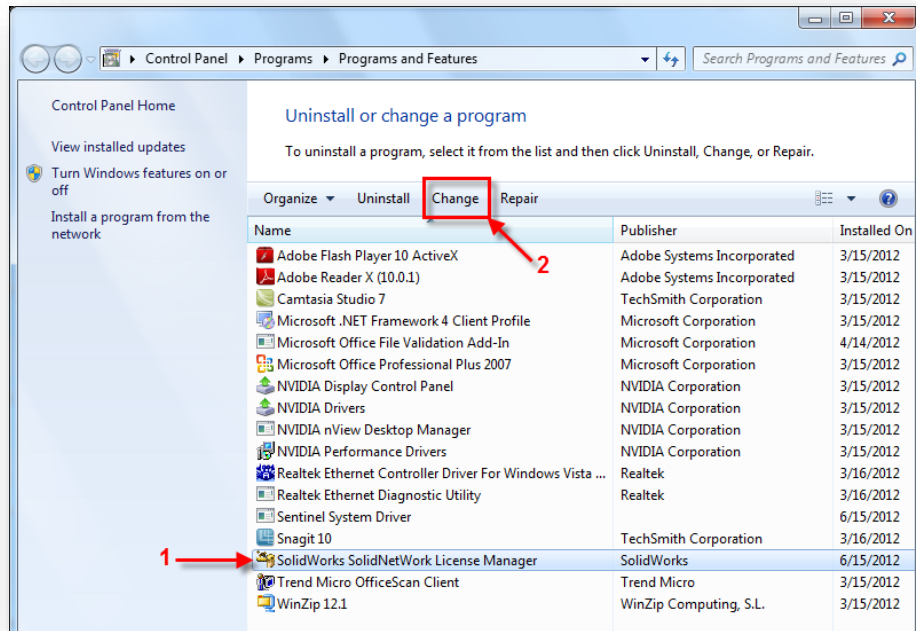


The leading numbers of the version number corresponding to the required SNL version (SNL 2019 PR1) should be 27. So if different, prior to add the DraftSight Serial Number, a License Manager upgrade is required (please refer to the topic **1.1.1 What you need** for information on how and where you can access the correct/required SNL version).

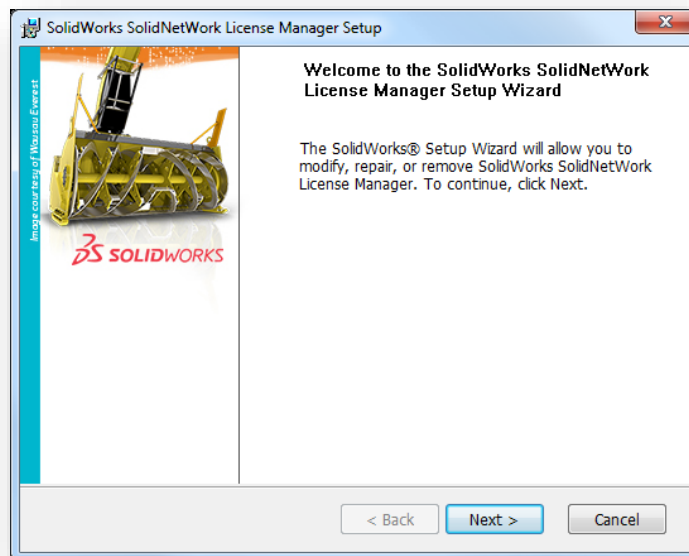
6. Adding and activating the DraftSight Serial Number

The first step is to add the DraftSight serial number to the existing installation of SNL on the server.

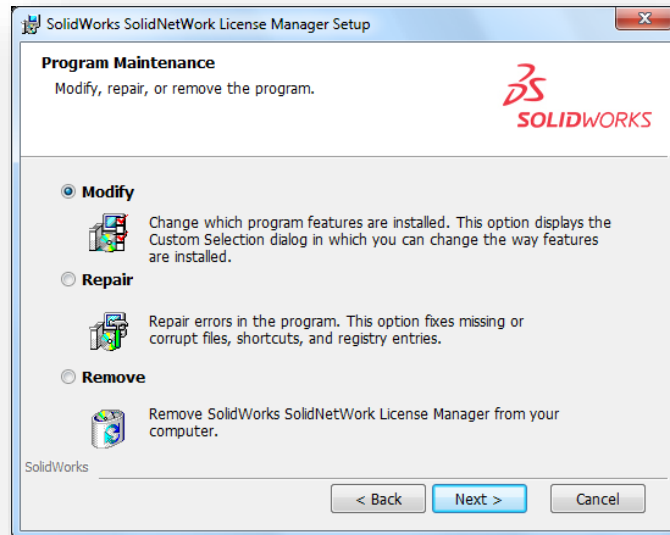
1. From Control Panel\All Control Panel Items\Programs and Features, modify the SNL installation: select SolidWorks SolidNetWork License Manager and click Change.



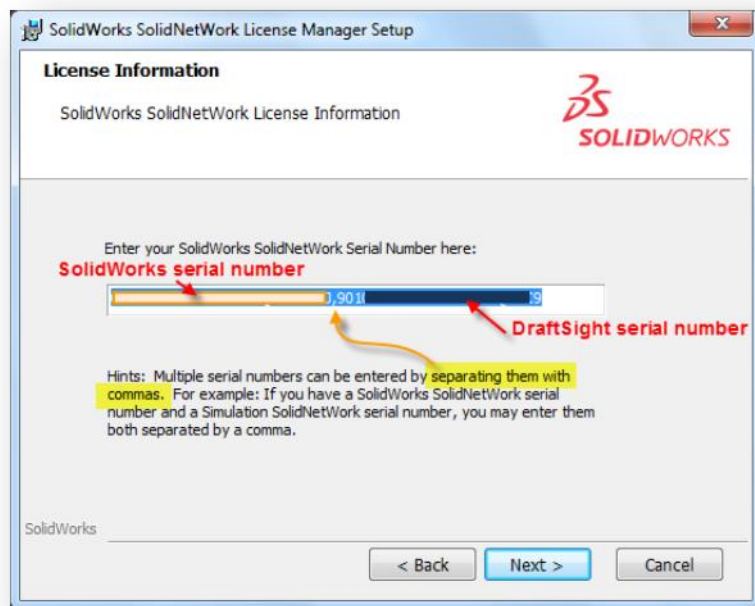
2. The SolidWorks SolidNetWork License Manager Setup dialog box appears, click Next.

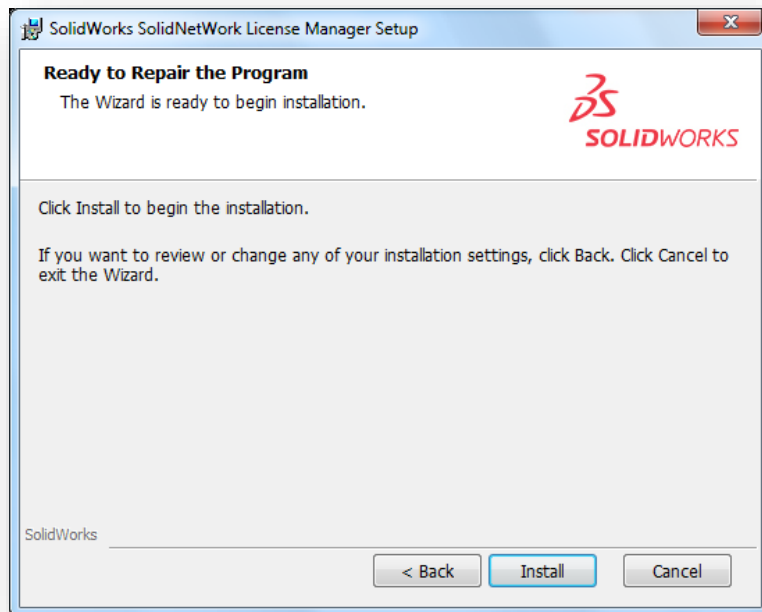


3. In the next dialog box, enable Modify and click Next.

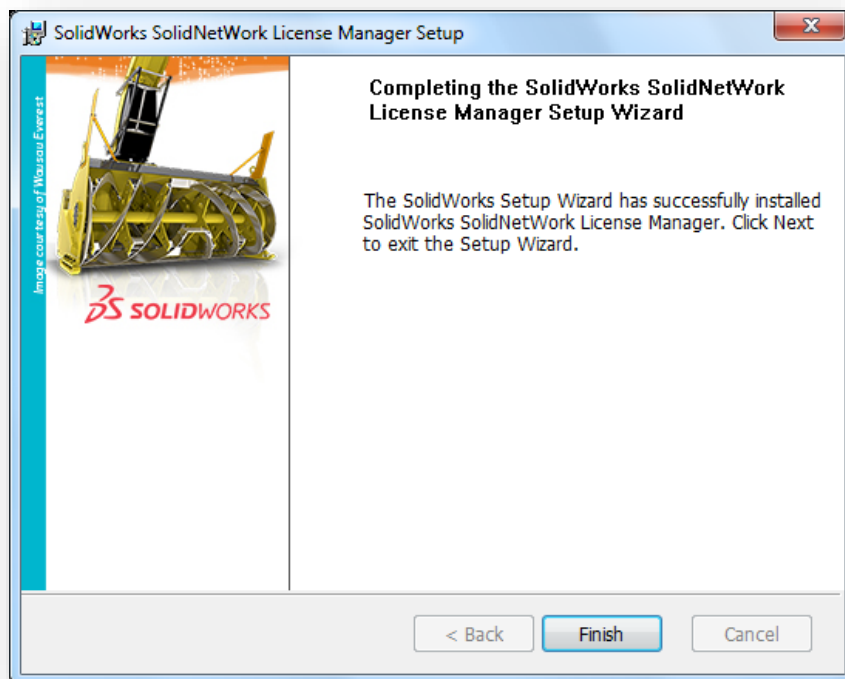


4. Next to the existing serial number, type in a comma, enter your DraftSight serial number and click Next.





5. Click Install.

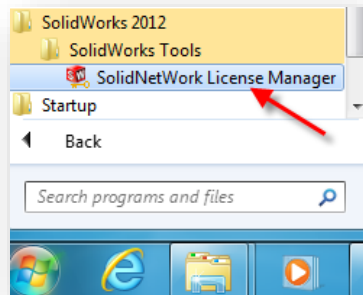


6. Click Finish to close the SolidWorks SolidNetWork License Manager Setup dialog box.

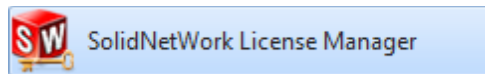
7. License Manager and Product Activation

The next step is to activate the DraftSight license.

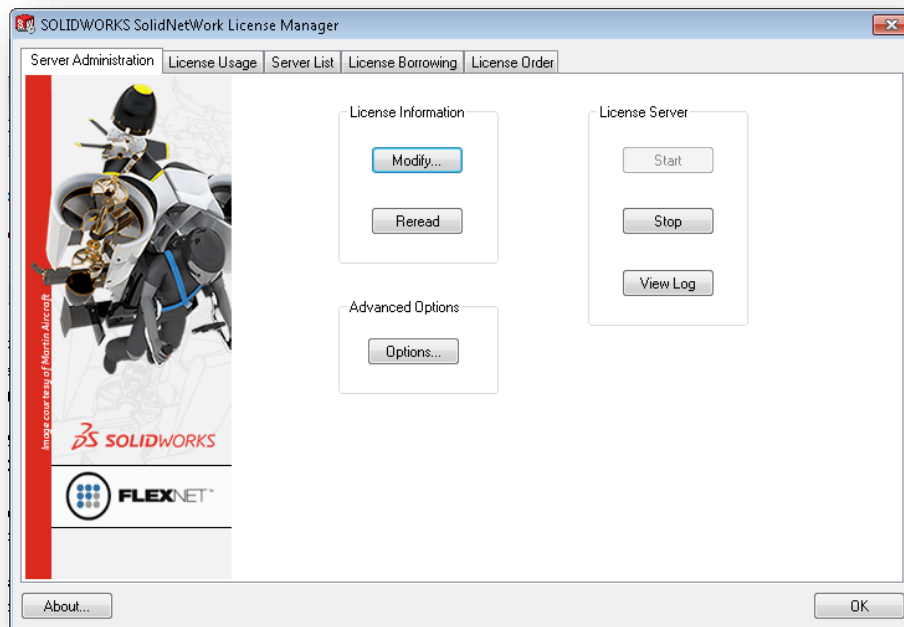
1. Launch SNL from the Start menu: All Programs > SolidWorks 2019 > SolidWorks Tools > SolidNetWork License Manager.



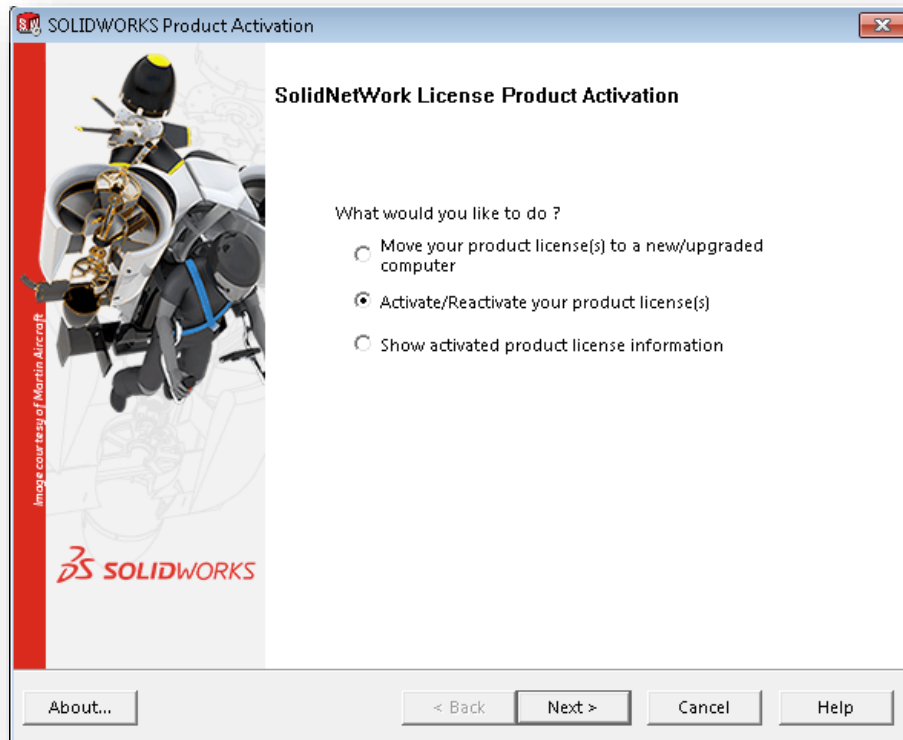
You may also have the icon in the Start menu, as shown below.



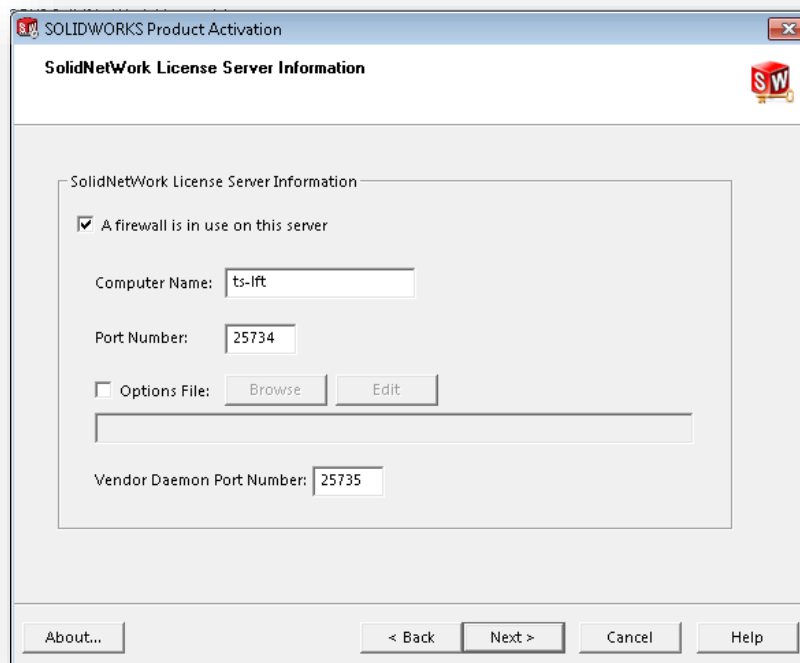
2. In the Solidworks SolidNetWork License Manager window, click on Modify to activate the DraftSight license.



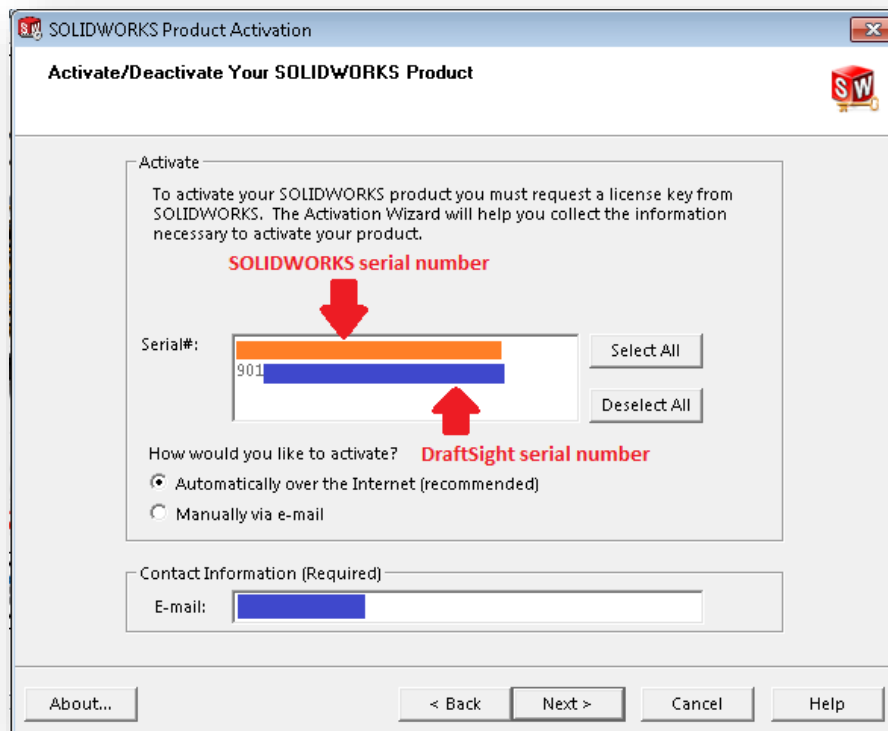
3. Check the option Activate/Reactivate a software license and click Next.



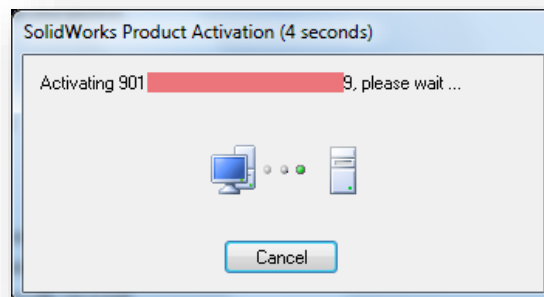
The SolidWorks Product Activation dialog box appears.



4. The Computer Name and Port Number are already populated. Click Next.

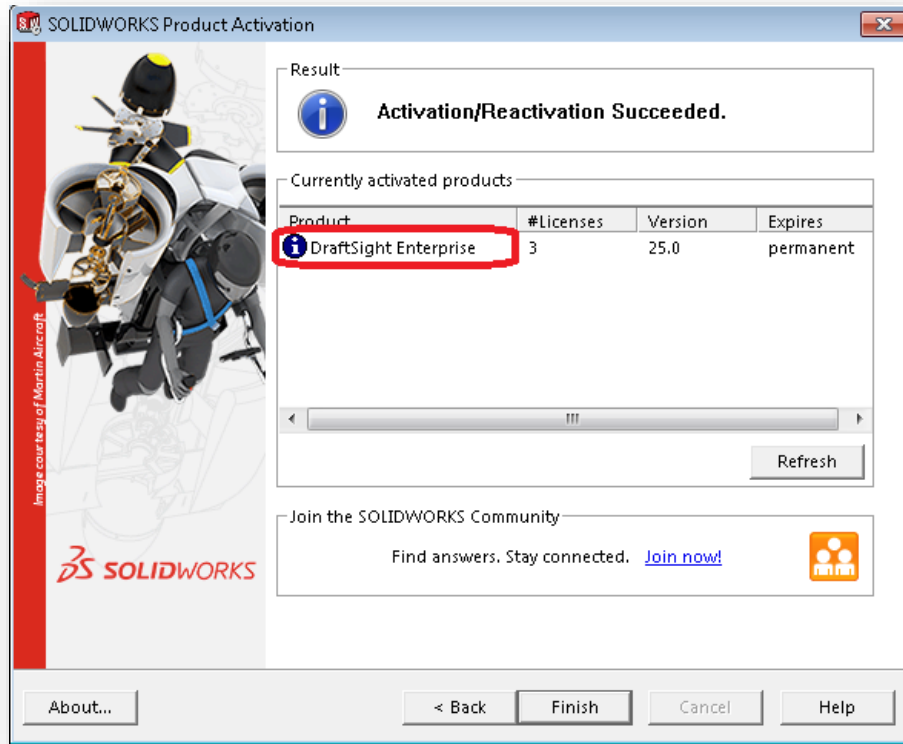


5. Select the DraftSight serial number, enable Automatically over the Internet (recommended), enter an email address and click Next.



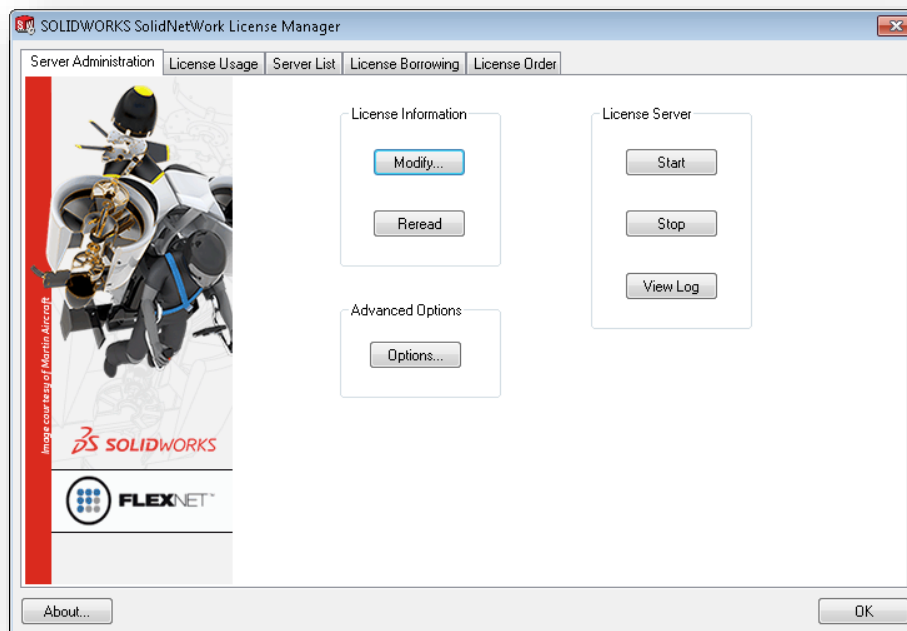
The activation is in progress.

The SolidWorks Product Activation dialog box appears and shows the number of licenses for DraftSight Enterprise that have been activated.

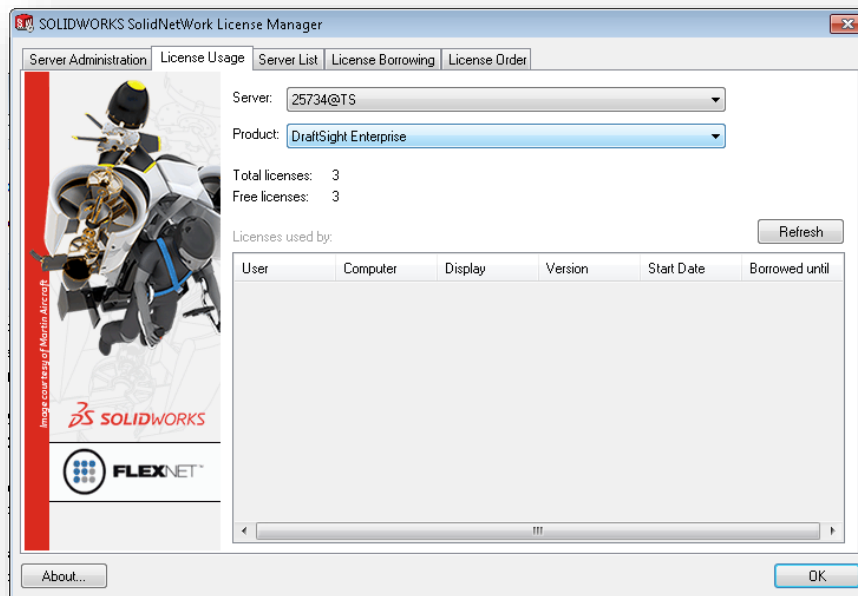


6. Click Finish to close the SolidWorks Product Activation dialog box.

The SolidWorks SolidNetwork License Manager dialog box pops-up.

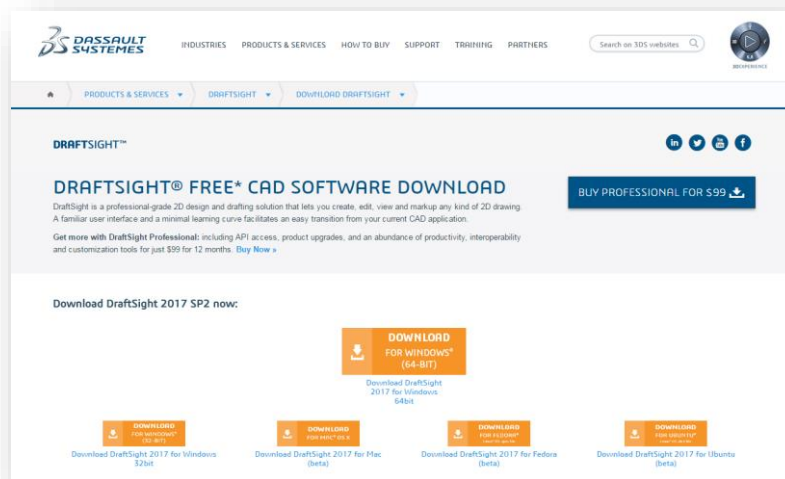


7. Select the License Usage tab.
8. 'DraftSight Enterprise' appears in the product dropdown list, alongside the products previously activated. Click OK to close the window.



8. Installing DraftSight on the workstations (manual)

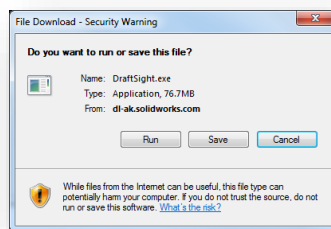
1. Download DraftSight from DraftSight.com/Download.



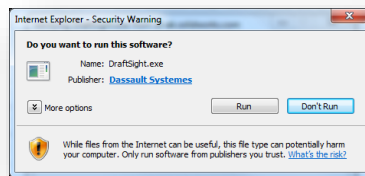
Note the different installers for 64bit and 32bit platforms.



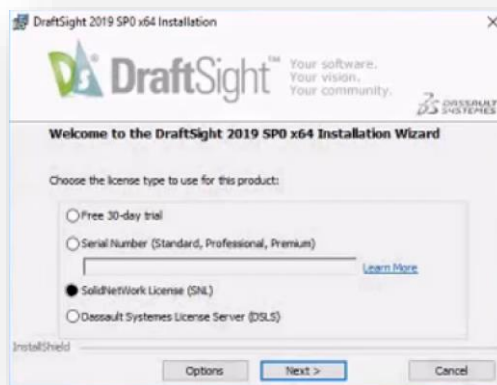
2. Click Accept at the end of the DraftSight License and Subscription Service Agreement to start the download.



3. Save the file on your desktop. Double-Click the file to start the install.



4. Select Run to start the installation

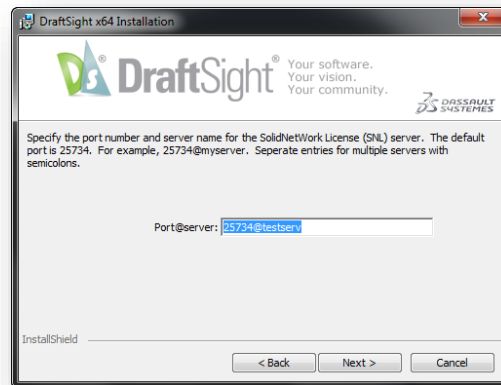


5. Make sure you select the SNL option, and click Next.

6. On the next dialog enter your SNL server information using the following syntax:

25734@servername

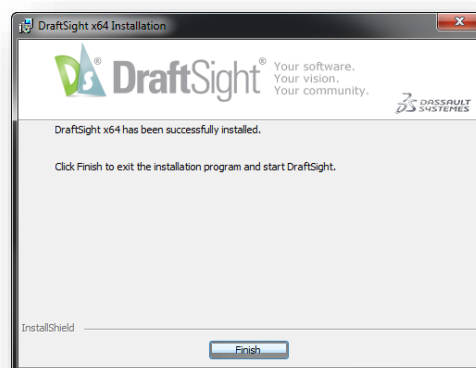
Then click Next.



7. Accept the End User License Agreement and click Install.



The installation will proceed.



Click Finish to close the installation dialog box and start DraftSight.

8.1. DraftSight Installation Deployment

If you want to install/distribute DraftSight to multiple machines, you can use the DraftSight Deployment Tool for that effect. To access the application, please contact your SOLIDWORKS reseller or the DraftSight Technical Support Team.

The deployment of the application is also possible via the command line. For more information on the process, please refer to the Blog post “Command Line Installation Example”, in the DraftSight Community (<https://r1132100503382-eu1-3dswym.3dexperience.3ds.com/#community:51/post:6407>).

9. Dassault Systemes License Manager (DSLS) Process Overview

This section covers the installation process for the DS License Manager (DSLS), on a supported Windows Operating System and the DraftSight Enterprise/Enterprise Plus on client machines. The DSLS installation and configuration will be presented in two scenarios :

- Installing DSLS for the first time
- DSLS Single License Server, configured with default settings

9.1.1. What you need

- ▶ A DraftSight Enterprise License File
- ▶ The DS License Manager (DSLS), Installer files
- ▶ The DraftSight Installer files

Note: You can access the DSLS and DraftSight Installer files in the following location:

<https://software.3ds.com/>

10. Preparing for Installation

To guarantee a successful installation, before you start installing either the License Manager in your Server or DraftSight in the workstations, it’s important that you review the system requirements, understand administrative permission requirements, and address the points referenced below.

NOTE: Keep in mind that the license file provided is machine specific, generated based on the TargetID of the machine that will act as License Server (provided in the Product Order) : It will not work in a different machine, even if the machine fulfills the stated System Requirements.

10.1. Review the Application's Pre-Requisites

Check if the machines on which you are going to install DSLS and DraftSight meet the system requirements. Not meeting the system requirements or supported platforms might originate performance problems and/or errors, either when using DSLS or DraftSight and its features.

The License Manager requirements are:

- ▶ For SNL: SNL version 2019 SP0 or later
- ▶ For DSLS: V6R2018x or later

The change in the pre-requisites does not require the replacement of licenses in use: Valid licenses will continue to be usable until their expiry date. In the same way, previous DraftSight versions installed do not require a mandatory update.

10.2. DSLS Supported Operating Systems

The DSLS supported Operating Systems are available in the product documentation and in the product download page:

<https://www.3ds.com/support/download/overview/>

*Only users with a Support DS Passport can download the DSLS server.

10.3. DraftSight Supported Operating Systems & System Requirements

With every DraftSight release, supported Operating Systems and System Requirements are published/available from a link available in the DraftSight Download page:

[DraftSight.com/Download](https://www.3ds.com/support/download/overview/)

11. Installing the DS License Manager

This section briefly presents what a typical license server and license client setup looks like, and highlights certain points you must keep in mind before and when performing the installation.

11.1. Preliminary Remarks

Before you start the installation, keep the following points in mind.

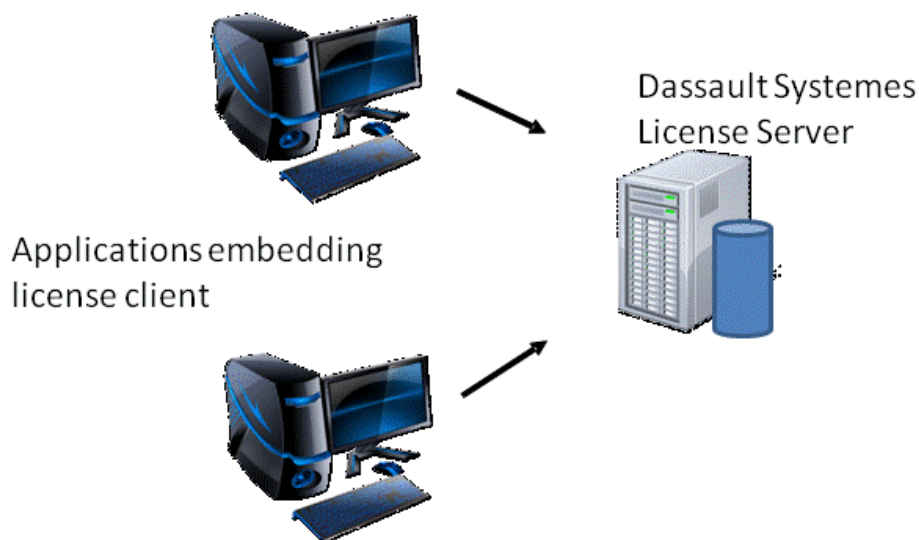
Virtual machines, such as VMWare, are not supported. It is not possible to either run or install the DS License Server on a virtual machine. Furthermore, extracting an offline license and using a nodelock license in a virtual machine are not supported.

Only one DS License Server can be installed and configured on a given computer, either as a standalone or as a failover member.

License servers and license client must be synchronized. An absolute time difference of one hour maximum is tolerated.

11.2. The License Server and Typical Client Setup

A license server helps the administrator to guarantee the license control is implemented in compliance with purchased licensed products embedding the license client. A typical license server and client setup looks like this:



DSLS License Manager supports multiple license clients by distributing licenses to clients on the network. This allows the number of users to exceed the number of licenses by using floating licenses.

- ▶ The DSLS License Manager software is installed and enrolling the license file provided, activates the license manager computer only.
- ▶ License client computers do not have any additional DSLS specific software installed.
- ▶ If you specify the option DSLS Licensing when installing DraftSight on the client machines, DSLS identifies the computer as a DSLS license client.
- ▶ The DraftSight Installation Manager will prompt you for the DSLS license manager computer name and port number to connect the client to the license manager.
- ▶ The license manager and all license clients must have TCP/IP (Transmission Control Protocol/Internet Protocol) connectivity.

11.3. Installing DSLS on the License Server Machine

This section explains how to install the DSLS License Server on a single computer running a supported Windows Operating System. Installation and de-installation rely on Windows-compliant tools enabling anyone familiar with Windows procedures and concepts to install the software without assistance.

1. Log on as administrator.
2. You must belong to the Administrators group, or have the privileges assigned to the Administrators group. Otherwise, you might not be able to start the installation.
3. Download the application installer using the link in the email received at the time of your purchase

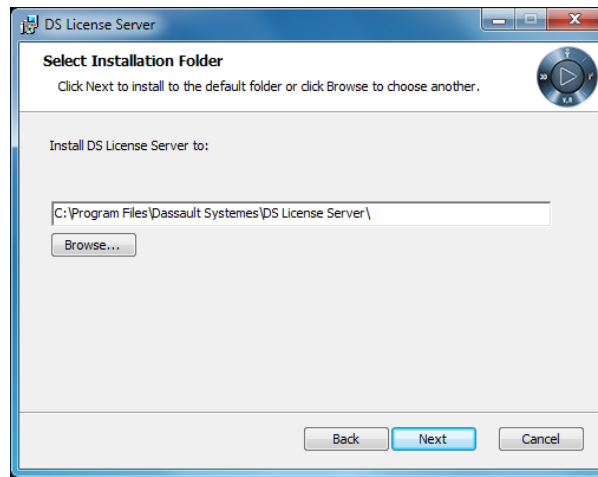
Prepare the license file that was sent to you in the second email received.

4. Navigate to the location where you saved the 'SetupDSLS.msi', double-click on it to start the installation, and the DS License Server Setup Wizard will be launched. Click Next to start the installation.



The DSLS License Manager Setup dialog box appears. Click Next.

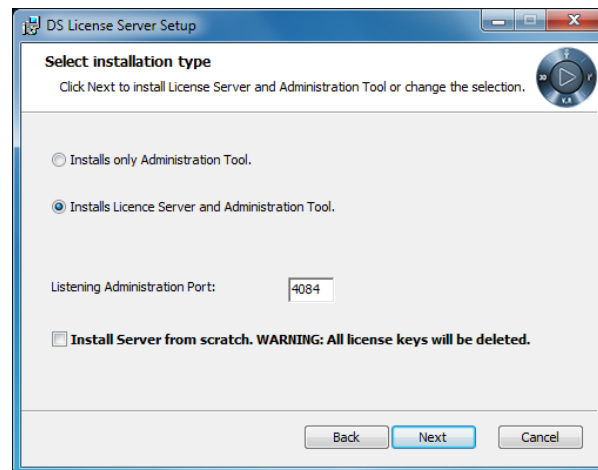
5. Select the installation folder.



The folder you choose must be empty. You can also specify a new folder: if the folder does not exist, you will be prompted to specify that you want the folder to be created, in which case you must click the Yes button to create the folder.

Click the Next button to move to the next step.

6. Select the installation type.



You have two choices:

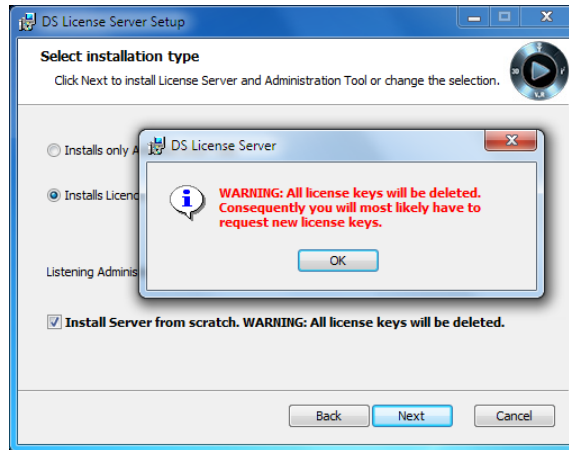
- ▶ Installs only Administration Tool: allows you to install only the License Administration Tool.
- ▶ Installs License Server and Administration Tool (default).

In our example, we are going to install both the License Server and the License Administration Tool.

Set the Listening Administration Port number. The port number you set is used to listen to DS License Server administration tool requests. The default is 4084.

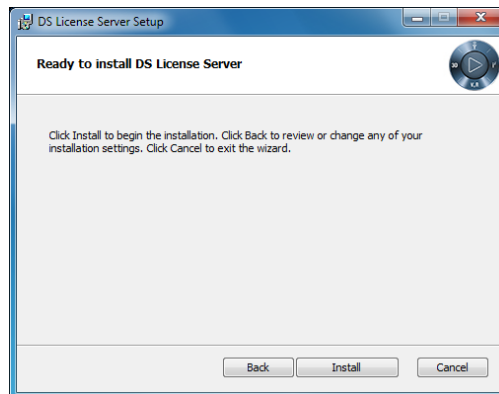
7. Decide whether to install from scratch or not.

Installing from scratch means that you are installing the DS License Server and also deleting all previous licenses in the license repository. This may be necessary if your licenses have been corrupted. To do so, check the Install Server from scratch check button. The warning is displayed again, informing that all licenses will be deleted if you continue:

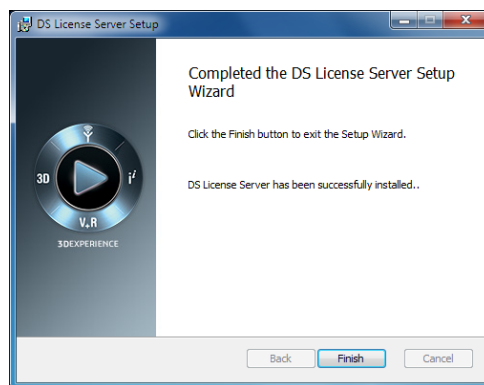


Click OK, then decide whether to continue installing from scratch, or uncheck the check box if you want to keep your existing licenses. Click the Next button to move to the next step.

8. Install the DS License Server. The Ready to install DS License Server dialog box appears:

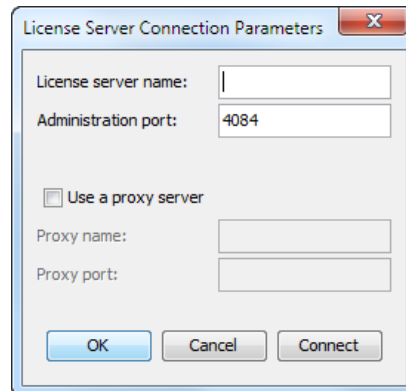


Click the Install button to install the DS License Server. If prompted by UAC to confirm, click the Yes button. The Installing DS License Server dialog box appears, and the progress bar will be displayed. Once the installation has been completed, the following dialog box appears:



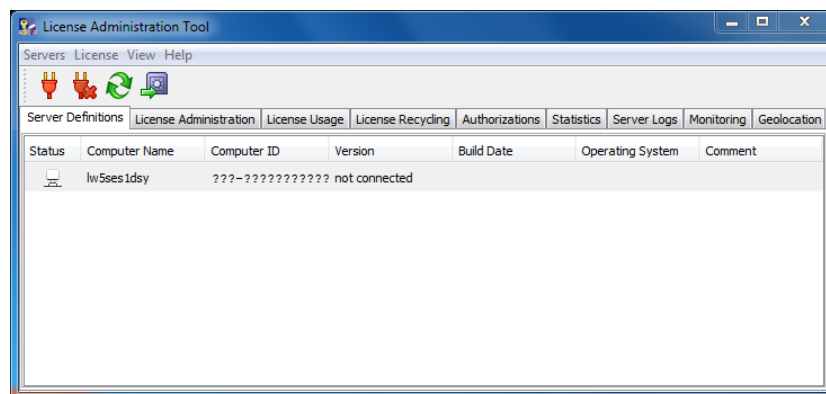
Once the installation has been completed, and the License Administration Tool is launched automatically, with the License Server Connection Parameters dialog box in the foreground.

9. Click the Finish button to exit the setup wizard. The License Administration Tool remains open. You now have to create a server definition for the license server you just installed on your computer in the License Server Connection Parameters dialog box:



10. Enter the name of the license server (the name of the machine hosting the server, typically). Note that the letters you type are displayed in red until the machine name is found. Then, set the listening port number for the License Administration Tool and click OK.

The Server Definitions tab now looks like this:



11. Connect the License Server.

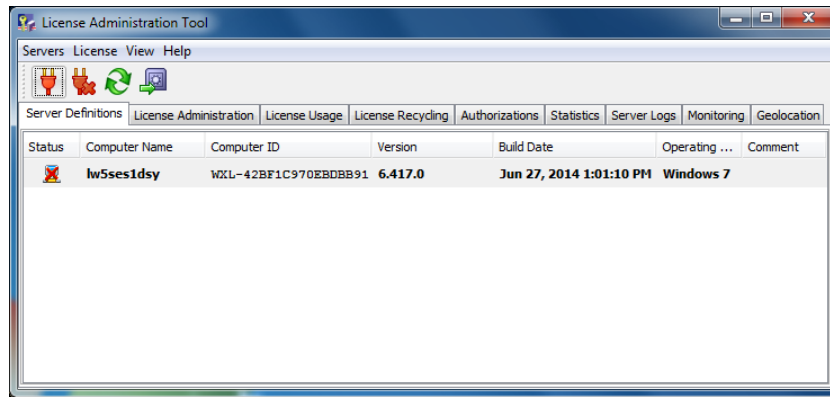
You must connect to the server to be able to use it. If you point to the icon in the status column, next to the computer name, a message like this will be displayed:

server xxx not connected

To connect to the server:

- ▶ Select the Servers - Connect command and select the server name from the list.
- ▶ Or, point to the icon, right click and select the Connect command.
- ▶ Or, you can also click the icon to connect all servers at the same time.

The icon appears over the computer icon like this :



You must now configure the server as a standalone server and activate it before being able to use it.

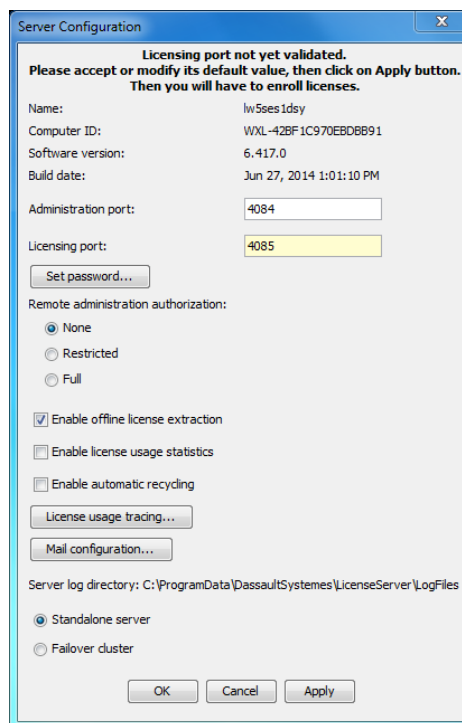
12. Configuration and Activation of the DS License Server

12.1. License Server Configuration


7. To configure the license server.

- ▶ Select the Servers - Properties command and select the server name from the list.
- ▶ Or, point to the icon, right-click and select the Display properties command.
- ▶ Or, double-click the line containing the computer name.

The Server Configuration dialog box appears:



You do not have to set any other options for the moment, apart from Administration port and Licensing port. For information purposes, there is a list of the information and options for this dialog box available in the DS License Server Installation and Configuration Guide pdf.

2. Click OK. Pointing to the  icon now displays the following message:


no license enrolled

For the moment, the license server is configured but not activated. You cannot use the license server until it has been activated. To activate the license server, you must enroll the .LICZ file containing the product licenses.

12.2. Activation of the DS License Server

To activate the license server, you must enroll the .LICZ file containing the product licenses.

1.Enroll the license as follows:

- ▶ Select the License - Enroll command or click the  icon. The Open dialog box is displayed.
- ▶ Select the appropriate .LICZ file containing your licenses, then click the Open button.
- ▶ The License Enrollment dialog box opens, containing messages confirming that the licenses have been enrolled on your server:

```
License enroll starting
lw5sesldsy: License enroll starting
Sending files to server lw5sesldsy

E:\Licenses\ILD-430814856494DBA7_7KLM-UMSBG-8VPL-CPMS-VIED3_0001_1.LICZ/FEAT-1-of-7.LIC

E:\Licenses\ILD-430814856494DBA7_7KLM-UMSBG-8VPL-CPMS-VIED3_0001_1.LICZ/FEAT-2-of-7.LIC

E:\Licenses\ILD-430814856494DBA7_7KLM-UMSBG-8VPL-CPMS-VIED3_0001_1.LICZ/FEAT-3-of-7.LIC

E:\Licenses\ILD-430814856494DBA7_7KLM-UMSBG-8VPL-CPMS-VIED3_0001_1.LICZ/FEAT-4-of-7.LIC


E:\Licenses\ILD-430814856494DBA7_7KLM-UMSBG-8VPL-CPMS-VIED3_0001_1.LICZ/FEAT-5-of-7.LIC

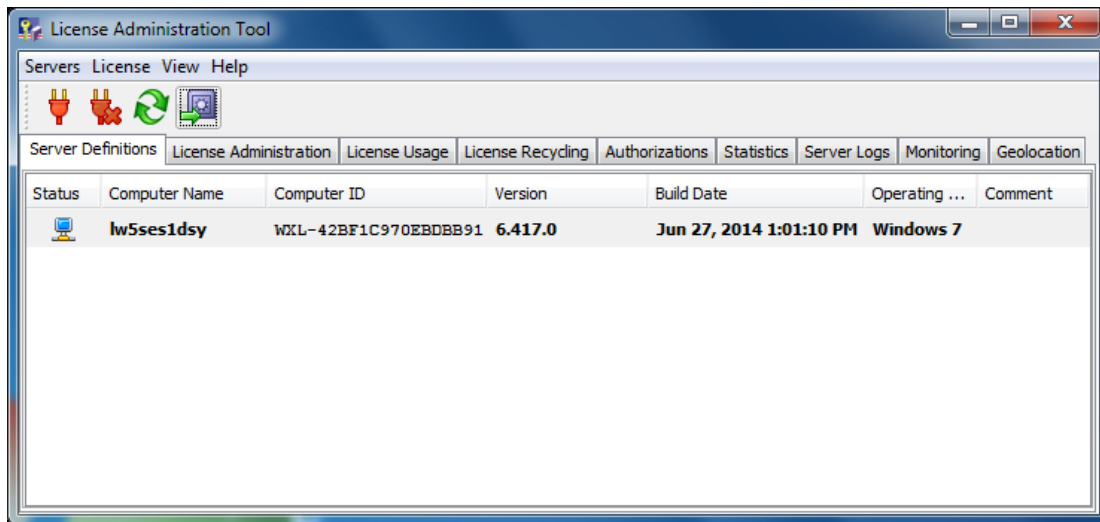
E:\Licenses\ILD-430814856494DBA7_7KLM-UMSBG-8VPL-CPMS-VIED3_0001_1.LICZ/FEAT-6-of-7.LIC

E:\Licenses\ILD-430814856494DBA7_7KLM-UMSBG-8VPL-CPMS-VIED3_0001_1.LICZ/FEAT-7-of-7.LIC

lw5sesldsy : 7 licenses received
```

- ▶ Click OK.

The  icon confirms that your server has been activated:



8. If you point to the icon, a tooltip like this will be displayed:

server lw5ses1dsy (10.232.65.105) connected

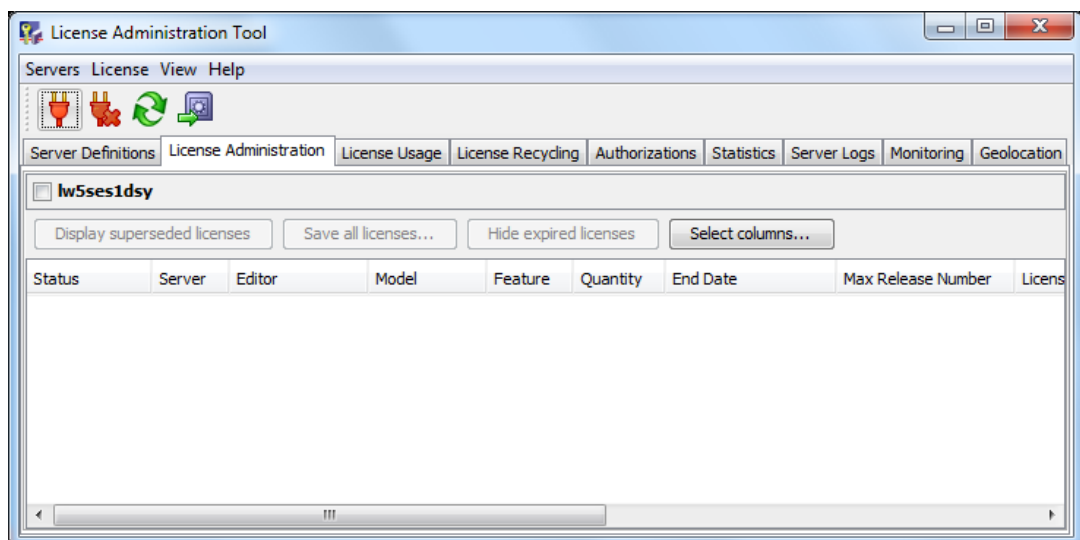
confirming that your license server is up and running.

Warning: the Activation license included in .LICZ files with the product licenses is valid for only 30 days. You must activate the license server within 30 days after having received the license file. If you need to activate the server a second time, after the first 30 days, the original activation license included in the original .LICZ file will no longer be valid, in which case another activation license included in another .LICZ file is required. You only have to activate the license server once. The 30 days apply to the life of the activation license, not to how long the license server remains active.

12.3. Managing Licenses

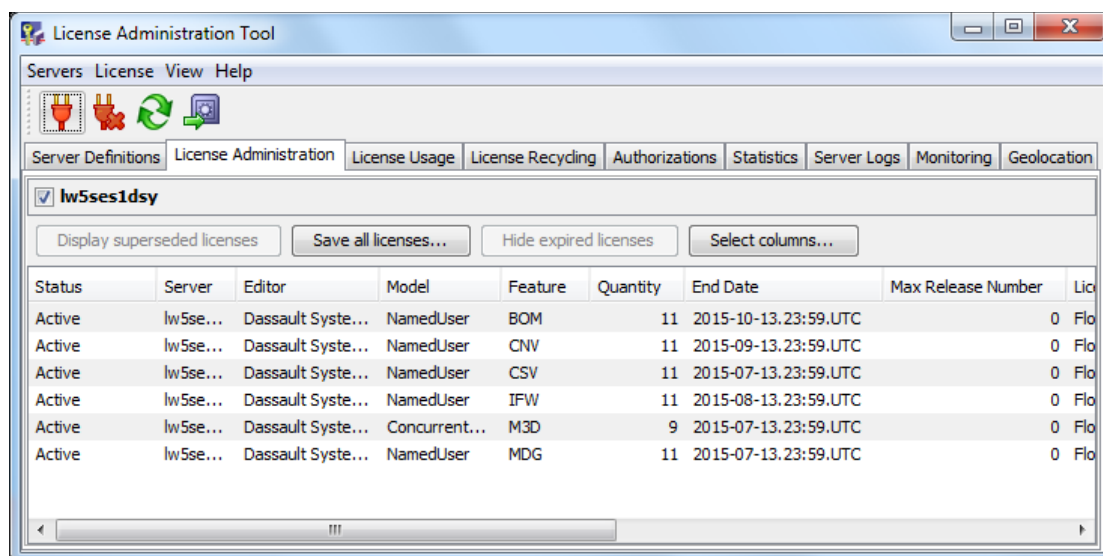
You can perform simple license administration tasks on licenses after enrolling them.

1. Click the License Administration tab:



2. Check the check box next to the desired server name to view the licenses enrolled on that server.

The licenses you enrolled are listed:

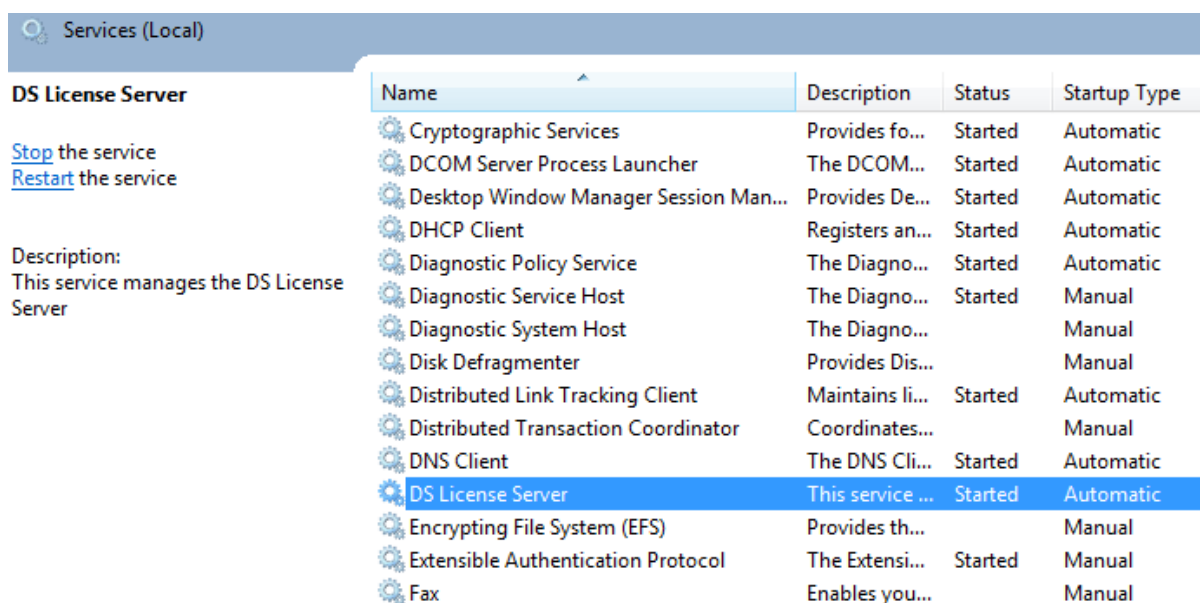


For information purposes, there is a list of the information and options for this dialog box available in the DS License Server Installation and Configuration Guide pdf.

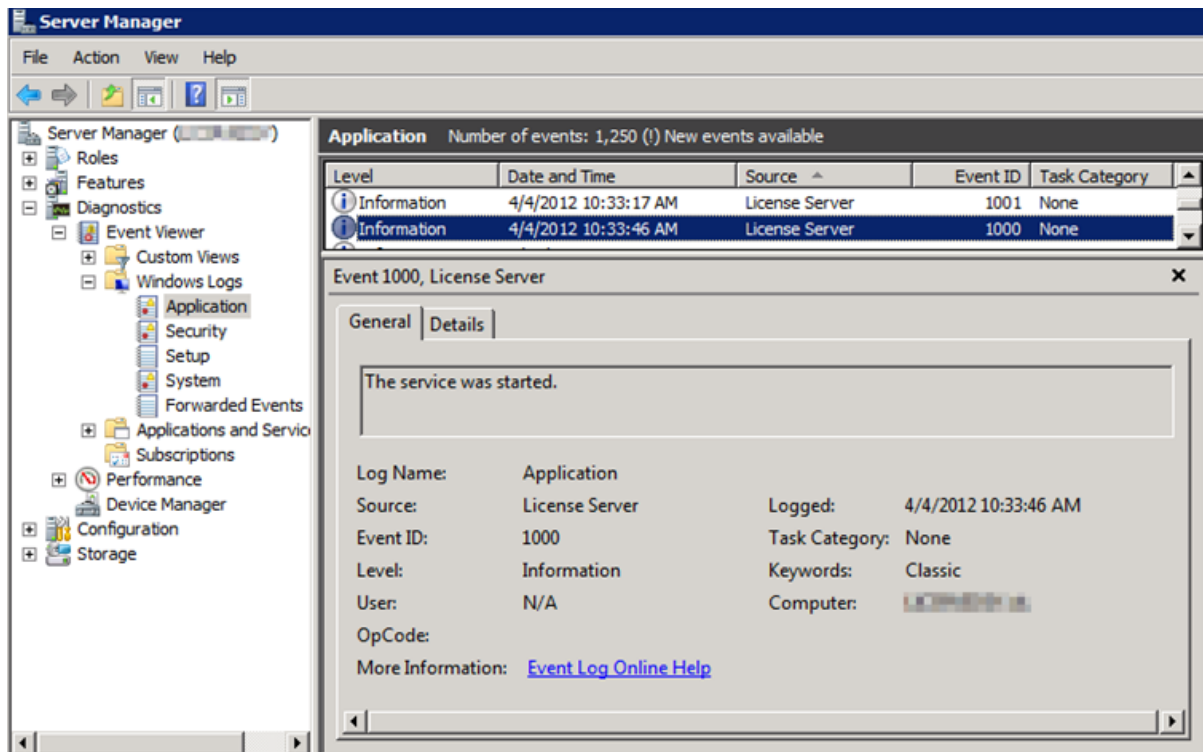
13. Starting and Stopping the DS License Server

The first and simplest way is to use the standard Windows Services management tool and stop the DS License ServerWindows service.

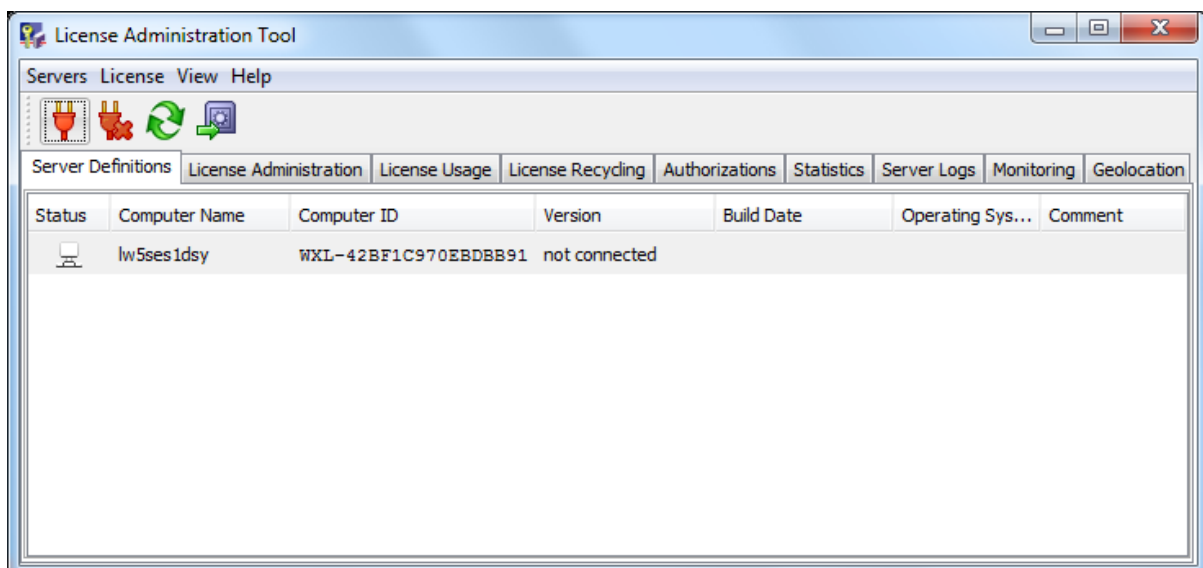
When you installed the DS License Server, a Windows service named DS License Server was created and configured automatically to start the license server. The service guarantees that the DS License Server is always started automatically when you log on:




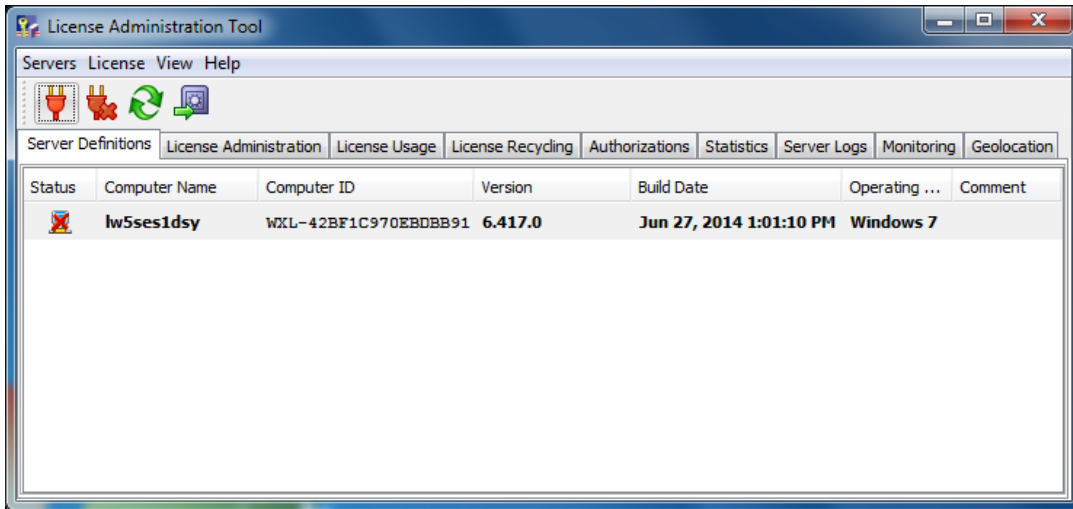
Information and errors related to the DS License Server service are logged in the Windows event log and can be viewed using the Event Viewer, under License Server in the Source column in the Application section, as illustrated below:



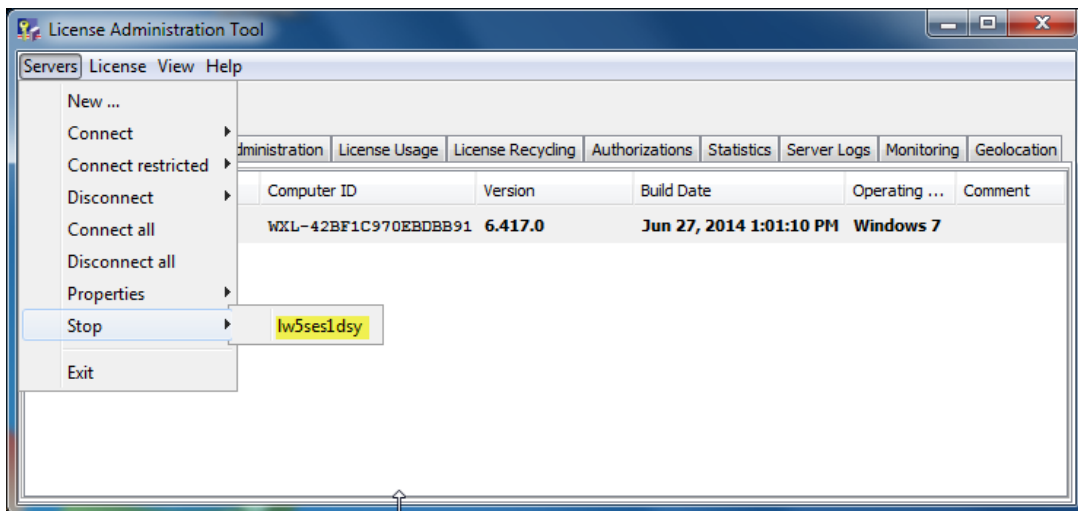
Additionally, to stop the license server, you can also select Start - All Programs - DS License Server - License Server Administration to launch the License Administration Tool if it is not already launched:



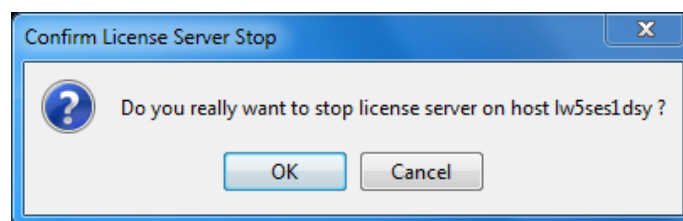
Connect to the license server by pointing to the  icon, right-clicking and selecting the Connect command:



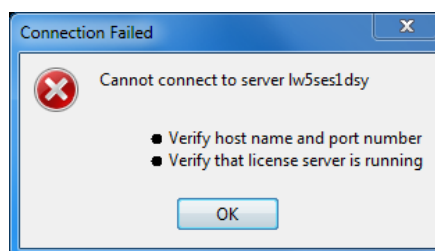
Select the Servers - Stop command and select the server name.



A dialog box appears prompting you to confirm that you want to stop the server:



Click OK. You are immediately disconnected from the server: If you try to connect to the server, the following dialog box appears:



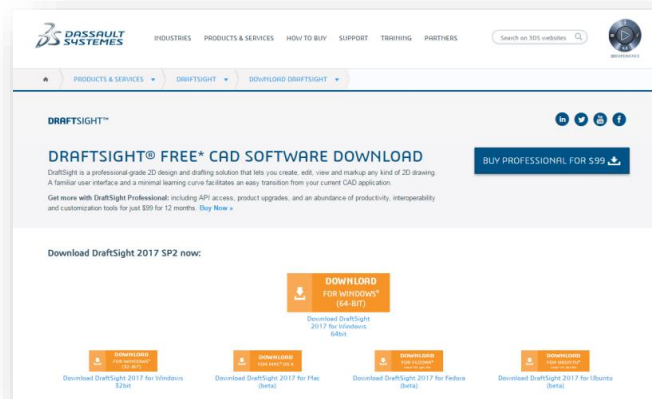
prompting you to check the server hostname and port number, and to check if the server is running, which is not the case, because it has just been stopped. Click OK to access the license server configuration parameters enabling you to check the server hostname and port number. Click Cancel to exit.

If you access the Windows services and refresh the list, you will notice that the DS License Server service has been stopped.

To start the license server again, restart the DS License Server using the Windows Services GUI tool.

14. Installing DraftSight on the workstations (manual)

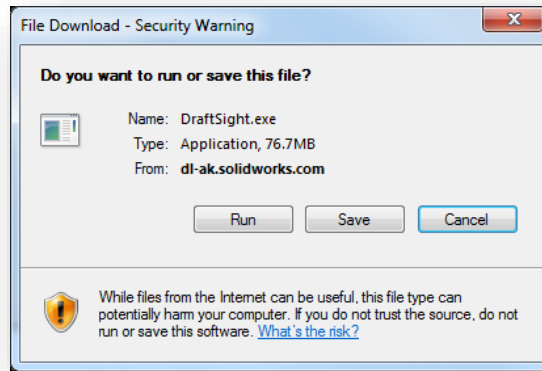
8. Download DraftSight from DraftSight.com/Download.



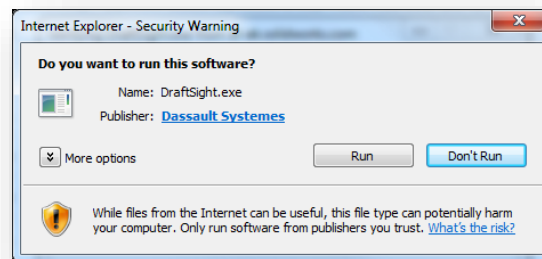
Note the different installers for 64bit and 32bit platforms.



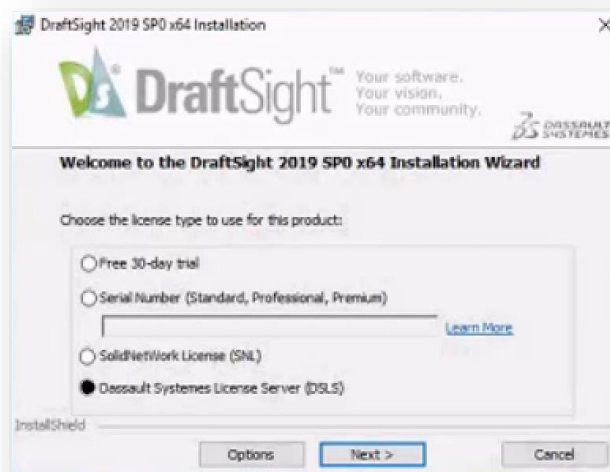
9. Click Accept at the end of the DraftSight License and Subscription Service Agreement to start the download.



10. Save the file on your desktop. Select Run to start the installation.



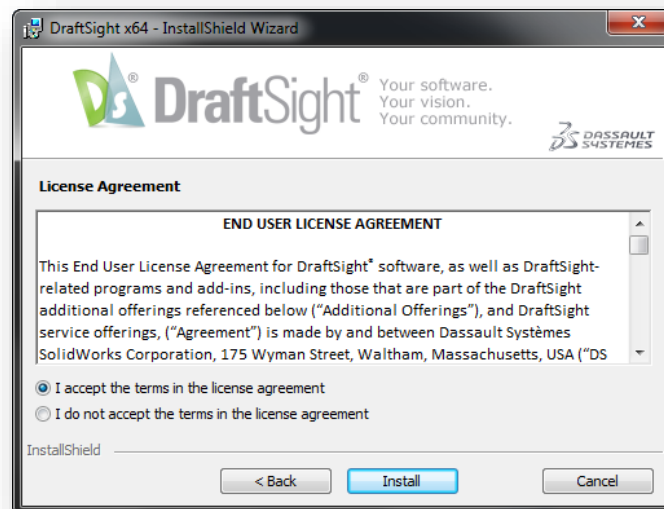
11. Select Run to start the installation



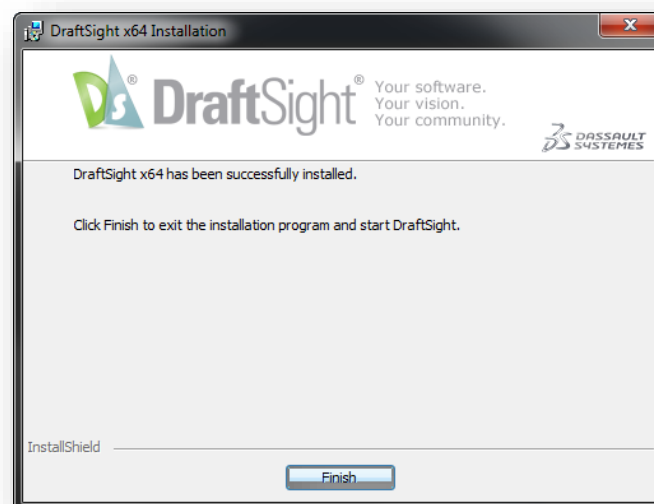
12. Make sure you select the DLSL option, and click Next.

13. On the next dialog enter your DLSL server information and click Next

14. Accept the End User License Agreement and click Install.



The installation will proceed.



Click Finish to close the installation dialog box and start DraftSight.

14.1. DraftSight Installation Deployment

If you want to install/distribute DraftSight to multiple machines, you can use the DraftSight Deployment Tool for that effect. To access the application, please contact your SOLIDWORKS reseller or the DraftSight Technical Support Team.

The deployment of the application is also possible via the command line. For more information on the process, please refer to the Blog post “Command Line Installation Example”, in the DraftSight Community (<https://r1132100503382-eu1-3dswym.3dexperience.3ds.com/#community:51/post:6407>).

Delivering Best-in-Class Products

 Virtual Products	 Model and Simulate our Planet
 3D Design	 Information Intelligence
 Realistic Simulation	 Dashboard Intelligence
 Digital Manufacturing and Production	 Social Innovation
 Collaborative Innovation	 3D Communication



3DEXPERIENCE®

Dassault Systèmes, the **3DEXPERIENCE** Company, provides business and people with virtual universes to imagine sustainable innovations. Its world-leading solutions transform the way products are designed, produced, and supported. Dassault Systèmes’ collaborative solutions foster social innovation, expanding possibilities for the virtual world to improve the real world. The group brings value to over 150,000 customers of all sizes, in all industries, in more than 80 countries. For more information, visit www.3ds.com.

CATIA, SOLIDWORKS, SIMULIA, DELMIA, ENOVIA, GEOVIA, EXALEAD, NETVIBES, 3DSWYM, 3DVIA are registered trademarks of Dassault Systèmes or its subsidiaries in the US and/or other countries.

Europe/Middle East/Africa

Dassault Systèmes
 10, rue Marcel Dassault
 CS 40501
 78946 Vélizy-Villacoublay Cedex
 France

Asia-Pacific

Dassault Systèmes
 Pier City Shibaura Bldg 10F
 3-18-1 Kaigan, Minato-Ku
 Tokyo 108-002
 Japan

Americas

Dassault Systèmes
 175 Wyman Street
 Waltham, Massachusetts
 02451-1223
 USA

Visit us at
3DS.COM



©2019 Dassault Systèmes. All rights reserved. 3DEXPERIENCE®, the Compass icon and the 3DS logo, CATIA, SOLIDWORKS, ENOVIA, DELMIA, SIMULIA, GEOVIA, EXALEAD, 3DVIA, 3DSWYM, BIOVIA, NETVIBES, and 3DEXCITE are commercial trademarks or registered trademarks of Dassault Systèmes or its subsidiaries in the U.S. and/or other countries. All other trademarks are owned by their respective owners. Use of any Dassault Systèmes or its subsidiaries trademarks is subject to their express written approval.